



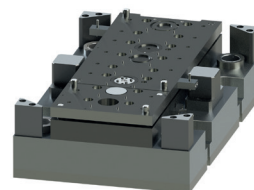
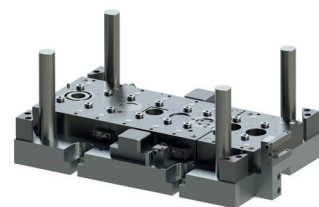
Ebauches Micromécanique  
Precitrame SA

MICROTECHNOLOGY



## STAMPS

These highly complex tools are made entirely by us, from design to production. We integrate in our stamps cutting, grinding, stamping or folding operations. We ensure their maintenance throughout their use. These tools guarantee your components a seamless repeatability.

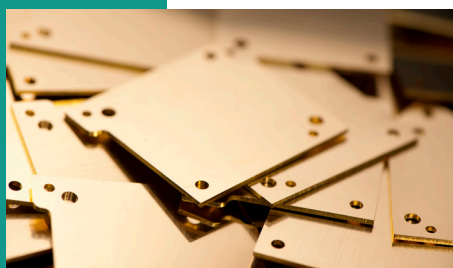


## MISCELLANEOUS TOOLS

We carry out various microtechnical tools such as work plates, clamping system clamps, measuring supports according to your needs.

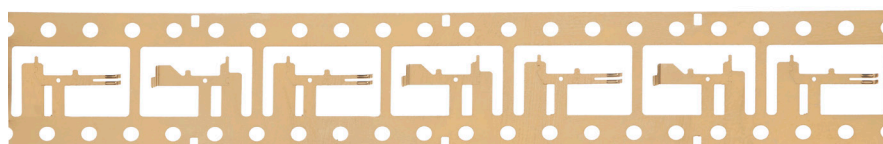
## MICROTECHNOLOGY COMPONENTS

Components can be manufactured in a volumetric way with stamps or prototyping by wire machines. They can be delivered with appropriate structural and surface treatments.



## MISCELLANEOUS COMPONENTS

A combination of micro-technical skills and machining enables us to produce complex high-precision parts. Our common history with Pre-citrame Machines SA has led us to develop this unique capability that also has other applications outside the watch industry.



## CONCEPTION - DEVELOPMENT

Our technical office accompanies you upstream of the manufacturing. We determine the feasibility study according to your requirements in terms of precision and finish. All new tools are developed on 3D design software.

## WIRE EROSION - RECTIFICATION

Our mechanical workshop prepares the work on CNC machines and high-performance EDM machines in complete autonomy. We also produce series of prototypes and wire erosion subcontractors.

## ASSEMBLY ADJUSTMENT

The final assembly of the components is carried out by our micromechanical workshop with extreme precision.

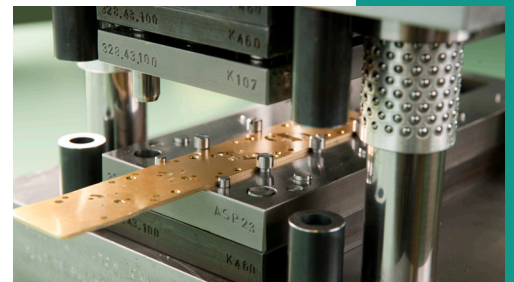
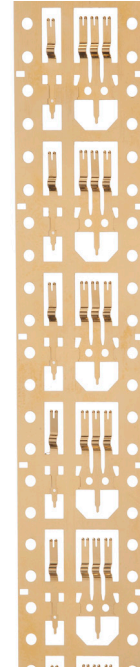
## CUTTING

Our workshop has 8 presses between 15 and 60T for cutting parts and miscellaneous components. The cutting shop provides materials in the form of blanks and strips for the milling shops. We guarantee that the raw material are traceable. The tools are maintained by our micro-mechanical workshop to increase their life-span and to optimize productivity.

## MACHINING

Prototypes are made on 5-axis machining units. All runs between 1,000 and 1,000,000 components are produced exclusively by our fleet of 28 CNC machining machines from our sister company, Precitrame Machines SA. These high-productivity machines represent an exclusive machining technology and are 20 times faster than 4-axis machining units capable of performing up to 20 machining operations using 80 tools. We are constantly looking for the best quality/volume/price ratio.

We have various probe, optical and laser control machines to handle quality control. Our SPC control system ensures the traceability of measurements throughout the value chain.



## ABOUT US

Precis-Trame SA was founded in 1983 following the closure of the regional ebauche factories, including Unitas SA. In order to meet the growing demand for ebauche movements for mechanical watches, the company has developed its own CNC transfer machines. In 2001, following the upgrade of its machinery division, the company was split into two separate companies, Precitrame SA and Ebauches Micromécanique Precitrame SA. The latter has become a specialist in the manufacture of watch and micro-technical components. Today, the company has 130 employees.



## PHILOSOPHY AND COMMITMENTS

Satisfying the needs of our customers is our foremost mission, and we strive to maintain and optimize the quality of our services and the performance of our equipment on a daily basis. EMP has strong ties with its region, and we consider that our human resources are our most precious asset. We invest in training for the upcoming generation and in continuing education. The well-being of our employees is a priority.



Ebauches Micromécanique Precitrame SA  
Combe-Aubert 3, 2720 Tramelan, Switzerland  
T +41 (0)32 486 96 10 F +41 (0)32 486 96 11  
info@empsa.ch www.empsa.ch