



Ebauches Micromécanique
Precitrame SA

WATCHMAKING

SERVICES

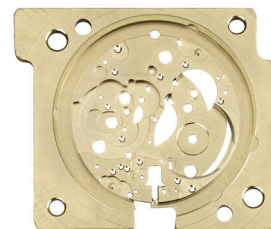
A watch component sub-contractor since 1983, we manufacture ebauche movements according to the plans provided. For runs from 1 to 1,000,000 pieces, our equipment can meet all requirements. The expertise of our employees and specialists enables them to provide you with technical and production advice to meet your expectations at every stage of the production process.

Our skills and those of our network of partners guarantee you correct delivery of your products in terms of both quality and deadlines.



BLANKS

We manufacture standard blanks in widths of 27, 34, 40 and 50 mm, with thicknesses ranging from 0.50 to 4.70 mm. They are made by stamping and can be delivered annealed and ground according to your wishes.



BARE EBAUCHE MOVEMENTS

The materials used mainly include brass, nickel silver, CuBe and various copper alloys. Our CNC transfer machines offer great flexibility for machining.



ASSEMBLED EBAUCHE MOVEMENTS

To complete our production range, ebauche movements can also be sent to the finishing workshop for parts to be assembled. Our expertise in the machining of ebauche movements enables us to prepare components for assembly and jewel-fitting operations. Thanks to our special PLC systems we have the flexibility to produce small and large runs. Depending on your needs, we can use parts delivered by you or handle supply ourselves.



CONTROLS

Our entire manufacturing process is covered by SPC dimensional control procedures with three-dimensional optical, probe and laser controls. Depending on the requirements of our customers, we also examine the aesthetics and cleanliness of the components.

DECORATED EBAUCHE MOVEMENTS

Our decoration and engraving workshop finalizes the product to bring out its finished appearance. The work done using «traditional» techniques or by a more modern approach with using lasers.

Our process includes the management of electroplating processing either with local partners or your own partners. These operations can take place before or after assembly, according to your wishes.

We can deliver you a finished plate from end to end, ready to be assembled.



WATCH COMPONENTS

Strategic watch components can be manufactured volumetrically using stamps or by prototyping using wire machines. With stamping we perform various operations on the component such as cutting, bending, stamping and shaping. Your components can be delivered with the appropriate structural and surface treatments.

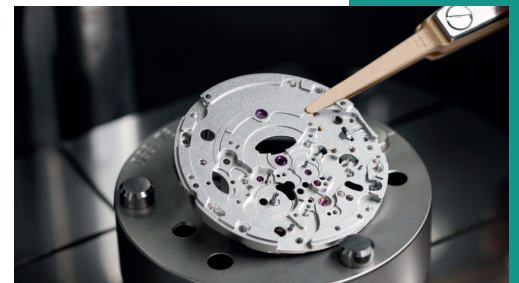
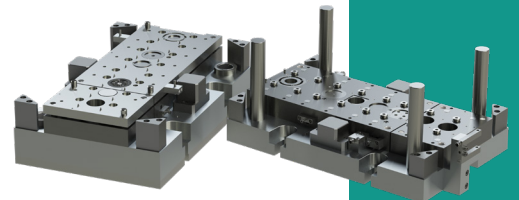
DIVERSIFICATION

Exterior watch parts (dials, cases, bracelets...) also have applications that fall within our area of expertise.

DELIVERY

Components can be delivered on trays or loose, depending on the requested finishes. The packaging can be supplied by you or by us.

We guarantee lead times and remain in constant communication throughout the production process.



ABOUT US

Precis-Trame SA was founded in 1983 following the closure of the regional ebauche factories, including Unitas SA. In order to meet the growing demand for ebauche movements for mechanical watches, the company has developed its own CNC transfer machines. In 2001, following the upgrade of its machinery division, the company was split into two separate companies, Precitrame SA and Ebauches Micromécanique Precitrame SA. The latter has become a specialist in the manufacture of watch and micro-technical components. Today, the company has 130 employees.



PHILOSOPHY AND COMMITMENTS

Satisfying the needs of our customers is our foremost mission, and we strive to maintain and optimize the quality of our services and the performance of our equipment on a daily basis. EMP has strong ties with its region, and we consider that our human resources are our most precious asset. We invest in training for the upcoming generation and in continuing education. The well-being of our employees is a priority.



Ebauches Micromécanique Precitrame SA
Combe-Aubert 3, 2720 Tramelan, Switzerland
T +41 (0)32 486 96 10 F +41 (0)32 486 96 11
info@empsa.ch www.empsa.ch